

SALTMINE + REVIT: REDUCED COSTS AND INCREASED UNDERSTANDING

Revit is a tool used for designing and documenting architectural projects. For our customers, this tool is used by 3rd party architects to show workplace teams 2D and 3D floorplans. However, most workplace teams do not have access or the skillset to use Revit themselves. This creates significant limitations in terms of project workflow and timelines.

Limitations of Revit for workplace teams

Not everyone "gets" Revit

Revit is a technical tool specialized in producing construction documents. It is not geared towards expressing design ideas to people without a design background.

Revit must be translated

Revit's native language is technical construction documents. Extra steps have to be taken to create presentation-quality images from Revit.

Revit knowledge gap

A niche technical background is required to fully leverage the tool and be successful, making it costly for workplace teams to use Revit internally.

Reliant on Revit experts

Even if a workplace team has a skilled Revit user, it can be time-consuming to use—particularly in the context of pre-design activities such as test fitting, scenario planning, and iterating new floorplan ideas.

All of these limitations can result in stalls in project processes and elongated project timelines. More importantly, it can put an extra strain on your design budget.

Challenges with Revit file management

Third party vendors, such as architects, typically control the Revit file, meaning workplace teams must trust that a floorplan has been properly converted into a PDF file from the most recent Revit file.

This creates a cumbersome situation as it's a lot of assuming and guessing, and the scattered nature of having files here and there does not allow workplace teams to fully grasp the current design and built environment.



Benefits of integrating Saltmine with Revit

For workplace teams who contract architects who use Revit, Saltmine replaces the typical "hand-offs" that it takes for a workplace team to assess and approve a floorplan designed in Revit.

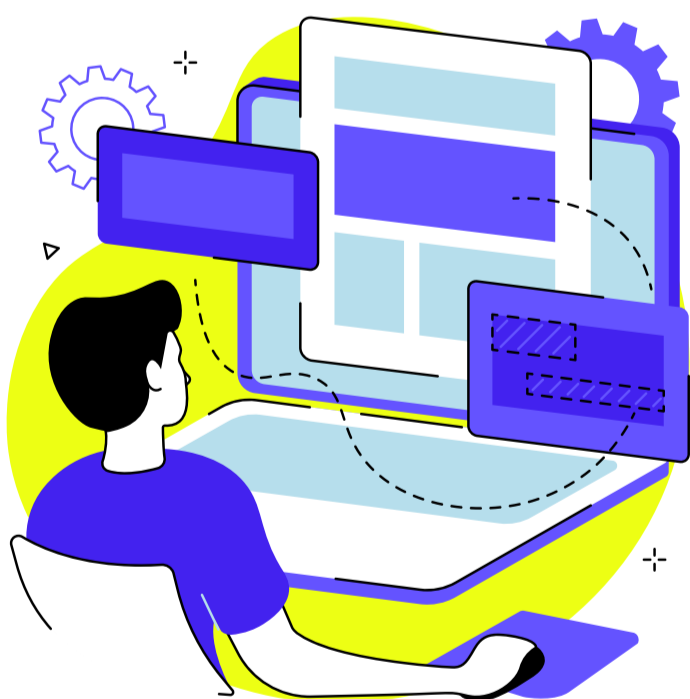
Streamlined workflow with Saltmine and Revit

For early design phases when most high-level decisions are made, a Saltmine and Revit integration allows everyone—from stakeholders and individual contributors, to 3rd party architects—the ability to work from a single place. This means that all design proposals, project documentation, and communication is accessible throughout the pre-design phase and into the schematic design process.



Interactive, immersive digital twin with Saltmine and Revit

This allows for an interactive, engaging, and immersive digital twin where everyone can experience floorplans as they evolve, as well as see a project through the same lens. The Saltmine / Revit integration allows non-technical individuals to comprehend designs all while enabling technical experts the ability to carry out their tasks effectively.



Value of integrating Saltmine with Revit

Better project communication

Seamless communication between your internal team and external contractors to keep everyone updated on project milestones. No more excessive project handoffs and miscommunication.

Have confidence in your project from the start

Accurately scope your work, estimate costs with confidence, and set a clear path to success from the very beginning of the project. No surprises.

No more project guesswork

Data integrations that can inform both the real estate strategy and the design process, allowing architects and workplace teams to make confident design decisions based upon evidence instead of assumptions.

This Revit integration is unique to Saltmine

No platform can integrate with Revit like Saltmine. Revit and Saltmine create the perfect pair to execute speedier capital projects—helping you create quality designs that you are proud to share with your workplace team (and everyone else).

Ready to get started?

[Request a demo with Saltmine](#)